

# Introduction to Western Art, Architecture, & Design

Summer 2017 – Session II

Emily J. Hanson

# Classical Rome



Apollo Belvedere

marble

130-40 C.E.



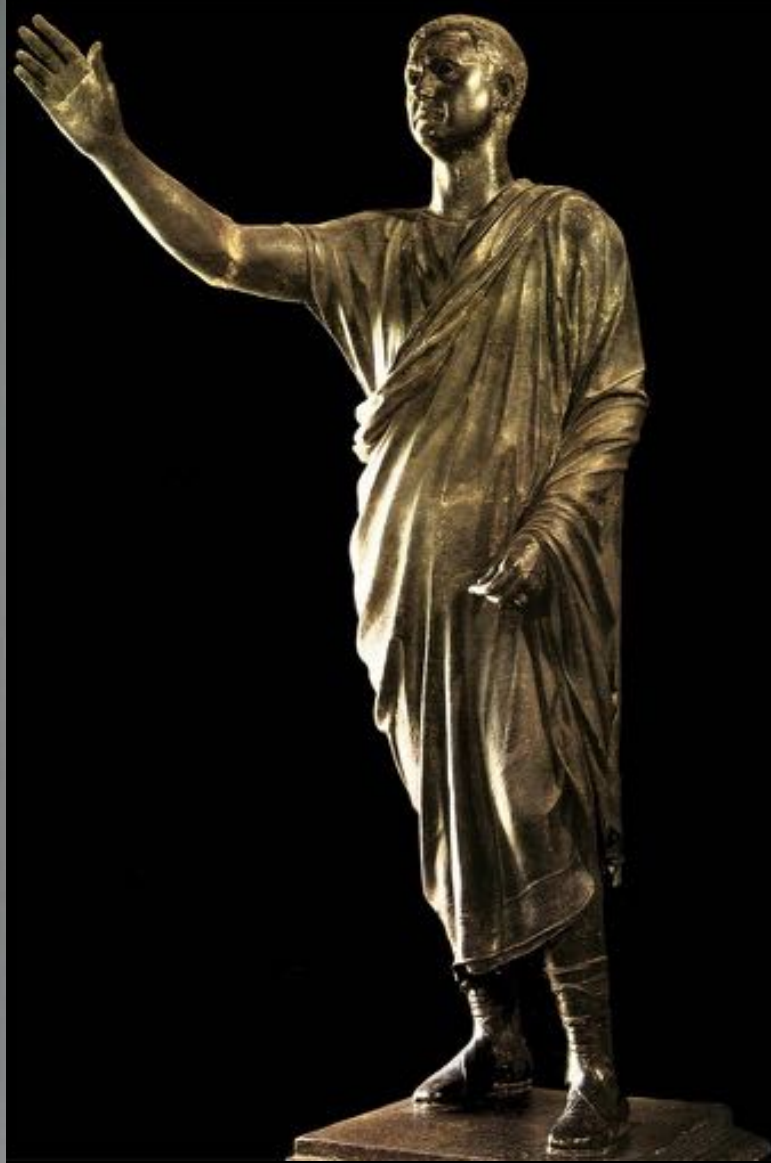


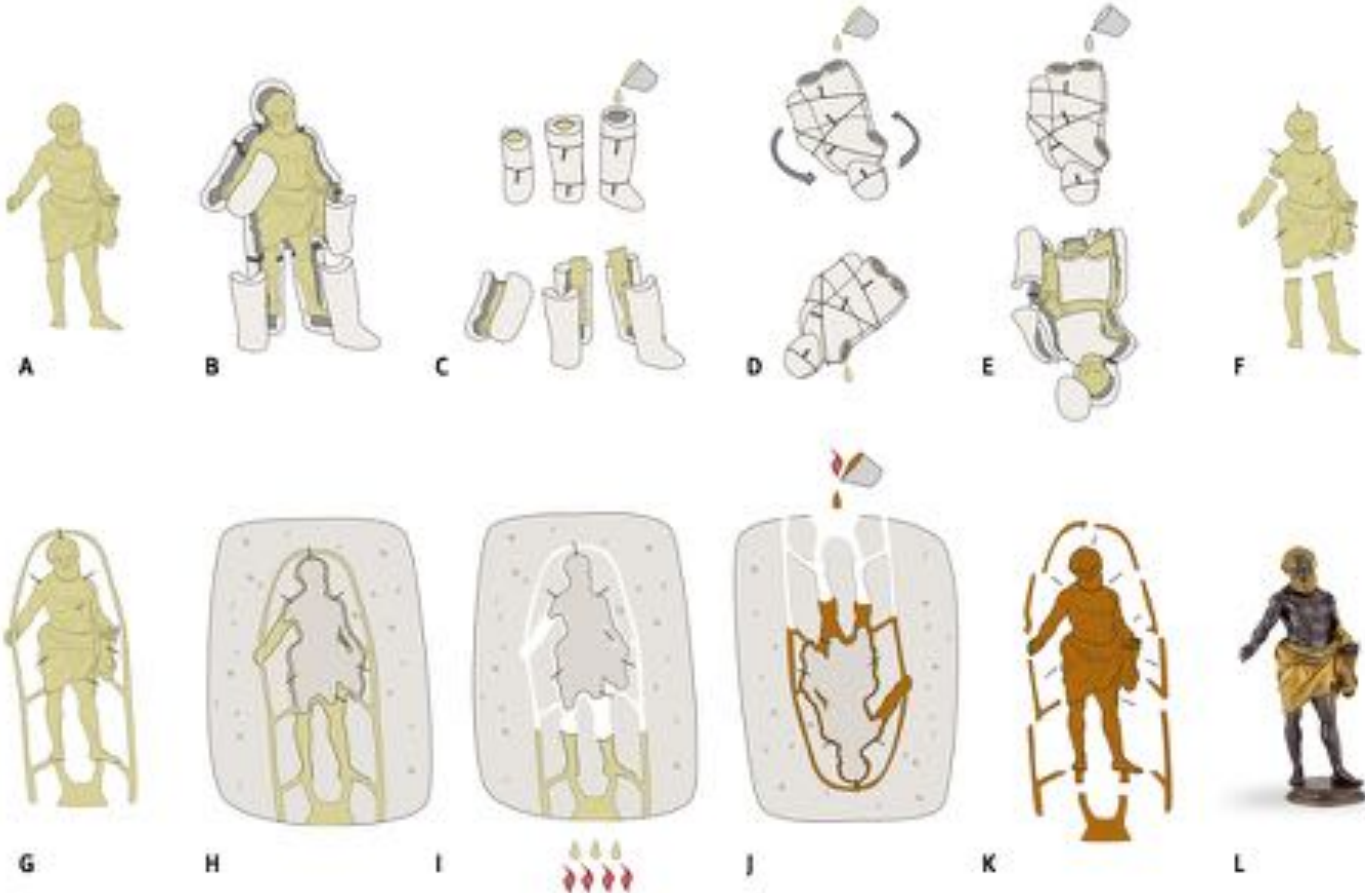
*Arringatore (The Orator)*

Etruscan

bronze

*ca. 80 CE*





**BRONZE (Shell Casting)**

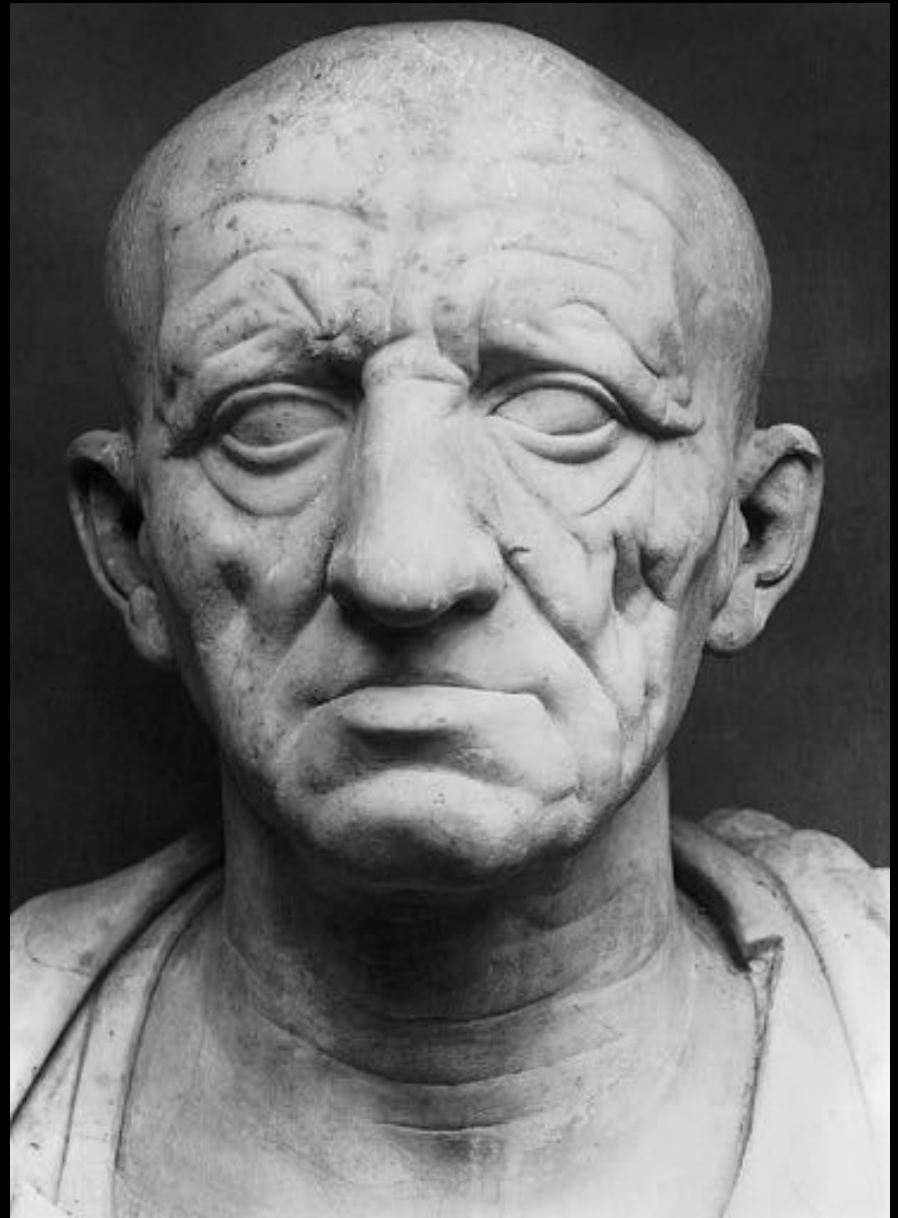
- SCULPTURE** (SCULPTOR)
- MOLD** (SCULPTOR, MOLD MAKER, OR FOUNDRY)
- WAX** (SCULPTOR OR FOUNDRY)
- WAX CLEANING** (SCULPTOR OR FOUNDRY)
- GATING** (FOUNDRY)
- DIPPING** (FOUNDRY)
- BURN OUT** (FOUNDRY)
- POURING** (FOUNDRY)
- REMOVING SHELL** (FOUNDRY)
- G. GATING**
- SAND BLASTING** (FOUNDRY)
- CHASING** (FOUNDRY OR SCULPTOR)
- PATINA** (FOUNDRY OR SCULPTOR)
- BASE** (FOUNDRY OR SCULPTOR)

Head of a Roman patrician

ca. 75-50 B.C.E.

marble

approximately 1 ft. 2 in. high





Portrait of Caracalla

ca. 211-7 C.E.  
marble  
14 in. high



Portrait bust of a Flavian woman

ca. 90 C.E.  
marble  
25 in. high



Portrait of a Roman General

Tivoli, Italy

ca. 75-50 B.C.E.

marble

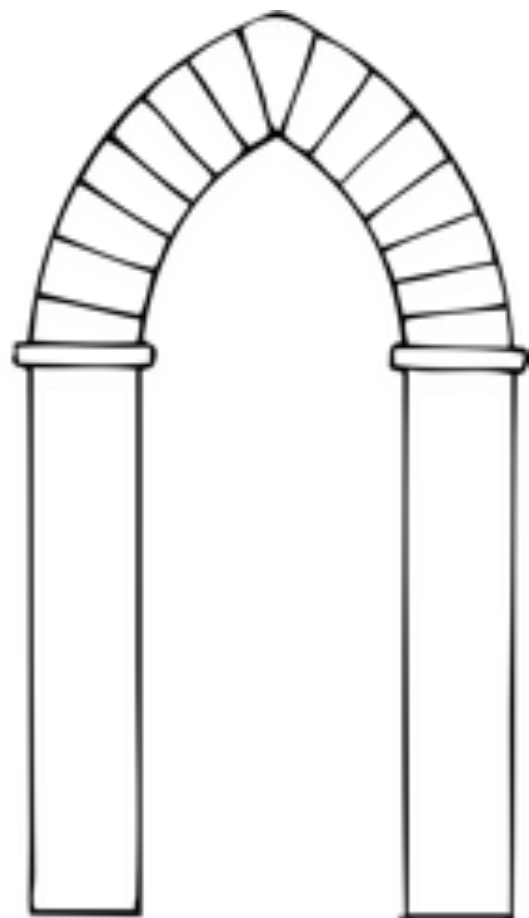
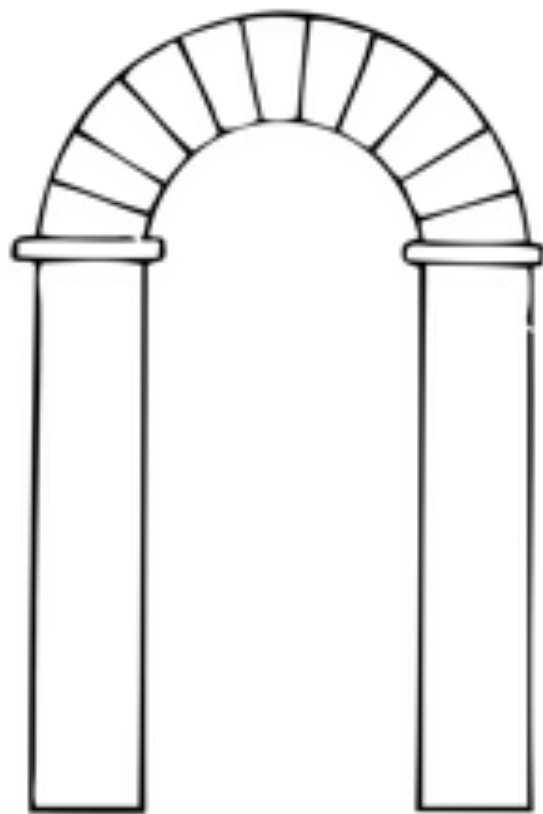
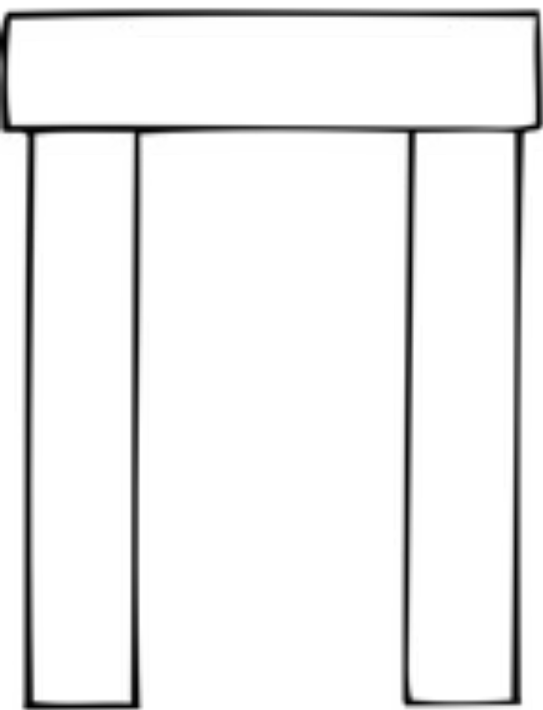
6 ft. 2 in. high



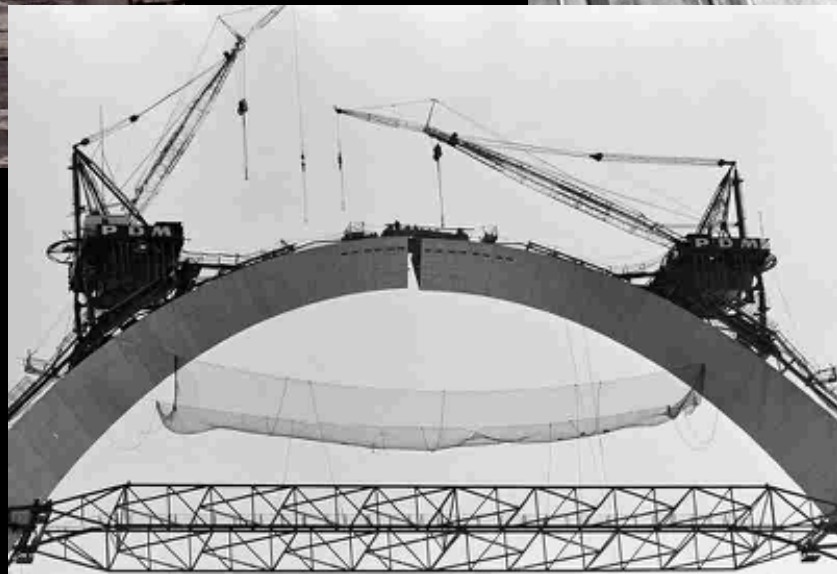


Temple of Portunus

ca. 75 B.C.E.



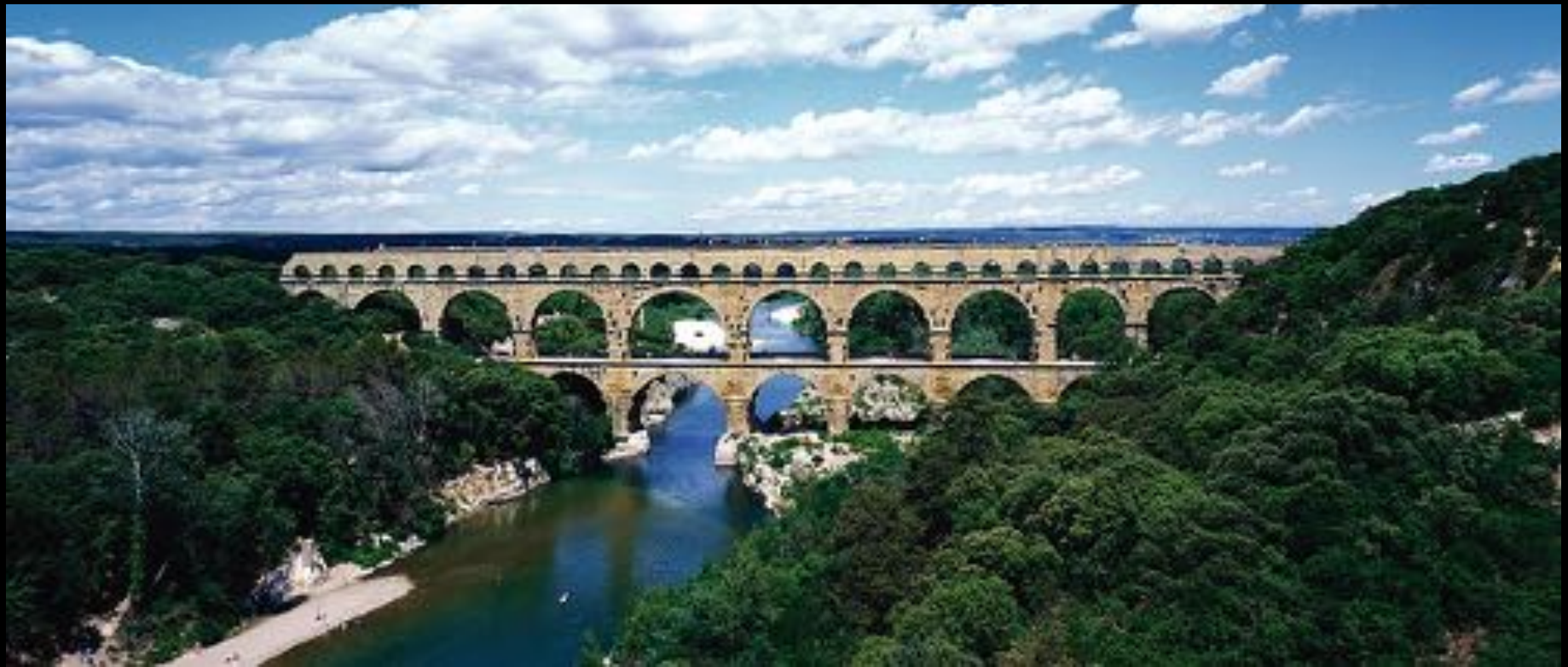












Pont-du-Gard

Nîmes, France

ca. 16 B.C.E.



Pont-du-Gard

Nîmes, France

ca. 16 B.C.E.



Arch of Titus

81 C.E.





Colosseum

ca. 80 C.E.



Colosseum

ca. 80 C.E.

# *Gladiator* (dir. Ridley Scott, 2000)

